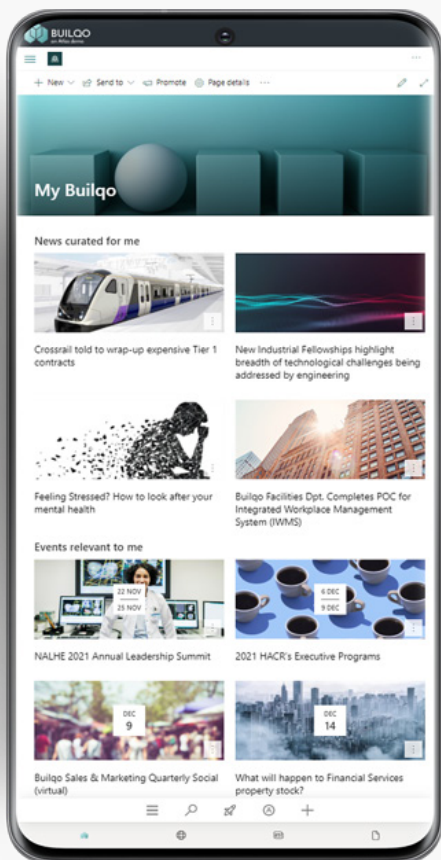


# Atlas enables rapid expansion for Wireless Logic

 **Size**  
500+ people

 **Vertical**  
Technology

Experts in IoT (internet of things) connectivity, Wireless Logic provides innovative and secure solutions to clients across all sectors. Founded in the UK in 2000, Wireless Logic is a rapidly growing business with recent expansion into locations from the US and Europe to China and Asia-Pacific. With this expansion, Wireless Logic needed to upgrade their SharePoint application to one that could keep pace with the changes and enable all entities to collaborate and benefit from their collective expertise.



## Project goal

A centralized digital workplace to manage knowledge and documents, address findability and enable employees around the globe to collaborate easily. Requirements included:

- Knowledge management
- Document management
- Intranet

## The project

An upgraded SharePoint intranet solution that keeps pace with the company's growth and provides a centralized, multilingual hub for information and culture.

## The results

- Rapid implementation of SharePoint, Microsoft Teams and Atlas.
- Centralization of documents and data helps users work efficiently.
- A more consistent, inclusive company culture.
- Easier communication across teams and geographic and language boundaries.

## Challenge

With multiple new companies coming into the fold, a key need was to centralize information and make it easier to find. In addition, the organization needed to provision working areas within Microsoft 365 in keeping with the company's data rules and governance policies, while still accommodating diverse cultures and work practices.

## Wireless Logic’s digital workplace requirements included:

- A knowledge and document management platform.
- Leveraging the power and value of their Microsoft investment.
- Governed onboarding of new acquisitions.
- A sophisticated Power Apps build to manage specialized workflows.
- Flexibility and agility.
- Fast and comprehensive search.
- Multilingual functionality.
- External insights and information.
- Fast implementation.

## ★ Solution

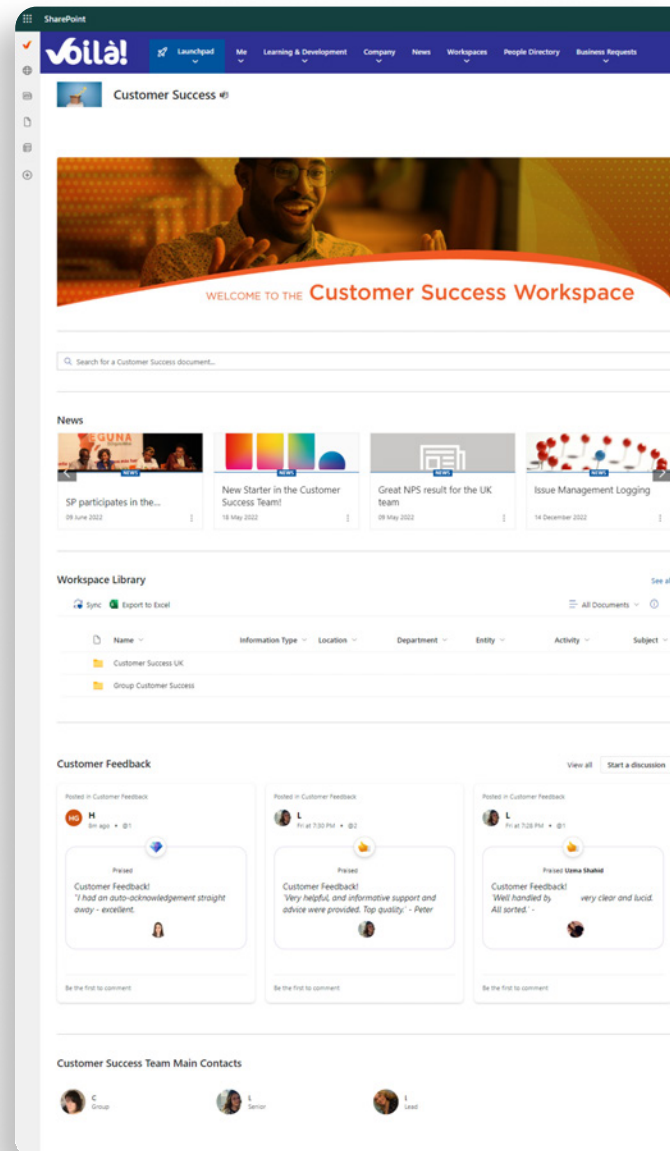
As a tech company themselves, Wireless Logic knew what they needed and selected ClearPeople’s digital workplace solution, Atlas, to address their key challenges:

- Using and extending Microsoft 365 technology.
- Inclusive and accessible employee experience that accommodates different cultures and practices (such as diverse ways of using Microsoft Teams).
- Provisioning and governance with Atlas ConneX.
- Centralizing several active directories into a single Azure directory.
- Creating a unified company culture.
- Supporting and future-proofing a rapidly growing company.

## ••• Implementation

ClearPeople provided initial training and ongoing support, but with their in-house SharePoint expertise, Wireless Logic was able to do much of the implementation themselves, with the COO and Head of Marketing heading up the project. This pragmatic, agile approach streamlined decision-making, and the project went from a signed contract to completion well within the first quarter of 2022.

Wireless Logic appointed champions in all their offices to encourage the adoption and use of Atlas, which the company calls Voila.



## Results

**Rapid implementation of SharePoint, Microsoft Teams and Atlas.**

### A customized intranet and digital workspace

- A homepage available in 8 languages from Danish to Spanish that uses the language selected in a person's browser settings.
- A customized Launchpad and a 'me' section with HR and wellbeing, learning and development information and workspaces relevant to each user.
- Described as the 'cohesive glue' that brings different entities together.

### Improved findability and flow of information

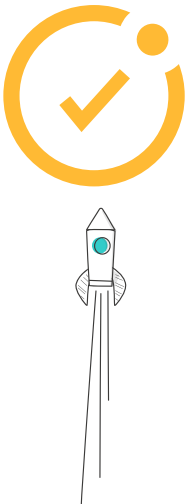
- Essential external technology news, insights and information about changing legislation is available to everyone.
- All internal information including practicalities such as time zones, public holidays and office locations is centralized.
- A people directory to find anyone at any location.
- Centralization of documents and data helps users work efficiently.

## The future

Atlas has helped onboard acquired companies from across Europe into a unified organization and the goal now is to increase its use.

Wireless Logic is also looking to leverage the Microsoft Viva suite, and add training and governance to achieve consistency in how everyone uses MS Teams.

Atlas has provided a single digital workplace for over 7 separate entities to communicate, collaborate and grow together into a leading global cellular network.



- Atlas is the cohesive glue that brings multiple offices together and onboards new acquisitions quickly and efficiently.
- A rapid, agile implementation of a new digital workplace in a few months.
- Atlas delivers relevant internal and external news keeping people across all locations up to date.
- Information is centralized and easily found with Atlas' fast, comprehensive search function.
- Atlas has accelerated the usage and adoption of Microsoft, particular MS Teams, across the company.

"Atlas is the cohesive glue that helps us meet the challenges of being a rapidly growing company across different teams and countries – particularly with things like findability and usability. Atlas makes knowledge and document management a part of our company culture and keeps us moving forward."